

ANOTHER YEAR BEGINS!

BY: SUPERINTENDENT JAMES DEROCHER

Summer, in what seems like a record for high temperatures, is past and we're looking forward to another school year. We are ready and excited to have the students back into the buildings. School will officially begin on Tuesday, September 4th, with a full day of classes for everyone. The official starting/ending times for each building are listed within the pages of this edition of the Miner's Lamp, as are the bus routes and pick-up/return times.

With the new requirement of all day, everyday Kindergarten this school year and a number of retirements from the staff, we have had a busy summer interviewing and hiring new teachers. As of this date, we will have 14 new teachers in our buildings. They are ready and eager to start the school year and in many cases, their careers as teachers. With the exception of an elementary counselor position, here are the new teachers and their assignments:

Special Education (ECDD) - Amy Hovis
Young Five/Junior Kindergarten - Andrea Bourdeau
Kindergarten - Chad Kemp, Allyson Tincknell, Maija Veihl
First Grade - Brittnee Balbierz
Second Grade - Mallory McCormack
Third Grade - Cody Scanlon
Fourth Grade - Sarah Hicks
Specials Instructor (Computers) - Nathan Fischer
Science (Middle School) - Krista Squires
English (High School) - Mary Rosten
Spanish (High School) - Amanda Miljour
Chemistry/Math (High School) - Cynthia Benaglio
Elementary Counselor - To be determined

While we would normally do all of our construction projects in and around the buildings during the summer vacation months, we have a number of projects that have been delayed and thus are either in process now or will begin shortly. The one that will cause the most upheaval will be the Safe Routes 2 School project around Lakeview. The City of Negaunee and the School District have received grant funds to upgrade the sidewalks on Birch Street and construct a sidewalk to separate the south parking lot from Birch Street. The project is expected to begin the last week of August and be completed within 30 days. We are also expanding the south parking lot at Lakeview by extending the blacktop to the west, toward Teal Lake, to accommodate more vehicle parking. This project is slated for completion by late September. The last project involves the replacement of most of the exterior doors at all the school buildings. The majority of this work will take place after normal school hours or on the weekends, with completion in mid-September. Please use extreme caution when dropping off or picking up students from Lakeview School during these construction periods and at all times.

As always, if you have questions concerning your child's education, please call their classroom teacher or building principal. We want to make this year another great one for learning.

CONTENTS

Page 2	School Information
Page 3	School Information
Page 4	Scholarship Donations, Kindergarten Registration
Page 5	Bus Schedule
Page 6	Bus Schedule
Page 7	Adult Education



BUILDING INFORMATION

All start and end times are subject to change

CENTRAL OFFICE

101 S. Pioneer Avenue, Suite 1
Negaunee, Michigan 49866
James Derocher, Superintendent
Phone: 475-4157
Business Office: 475-4156
Hours: 7 – 4:00

NEGAUNEE HIGH SCHOOL

500 West Arch Street
Negaunee, Michigan 49866
Mark Marana, Principal
Phone: 475-7861
Starting time: 7:40
Ending time: 2:50

NEGAUNEE MIDDLE SCHOOL

102 West Case Street
Negaunee, Michigan 49866
Dan Skewis, Principal
Phone: 475-7866
Starting time: 7:45
Ending time: 2:35

LAKEVIEW ELEMENTARY

200 Croix Street
Negaunee, Michigan 49866
Julie Peterson, Principal
Phone: 475-7803
Starting time: 8:55
Ending time: 3:45

SCHOOL CALENDAR

School is scheduled to start on Tuesday, September 4th and will be in session all day.

The school calendar is now available on the district's website

COMMUNITY EDUCATION ENRICHMENT CLASSES WILL BEGIN THE WEEK OF SEPTEMBER 17, 2012



MEAL PRICES

Elementary	\$1.00 per Breakfast and \$2.25 per lunch
Middle School	\$1.00 per Breakfast and \$2.50 per lunch
High School	\$1.00 per Breakfast and \$2.75 per lunch

The price of a reduced lunch is \$.40 and reduced breakfast cost is \$.30 per meal.



LAKEVIEW OFFERS LATCH KEY PROGRAM

Child & Family Services is currently providing licensed child care at Lakeview Elementary School for the hours before and after school. The program will run with the school calendar and be offered only when school is in session.

<u>Program</u>	<u>Hours of Operation</u>	<u>Cost</u>
Before School	6:45 am to start of school	Grades K-5 \$7.00 per day
After School	End of school to 6:00 pm	\$6.00 for additional siblings

There is a reduced rate if your child(ren) is/are in attendance for 30 minutes or less. The charge is \$3 per child for both of the Before School and After School sessions.



*DHS Child Care Assistance is accepted. Please contact the local DHS office to apply. (You may qualify if you receive other DHS services. You may also qualify if you receive Free/Reduced Lunch) For more information please visit www.cfsup.org, email syoung@cfsup.org or call 228-4050 ext. 120. Enrollment forms will be available at the Lakeview School.



SPORTS PASSES NOW AVAILABLE

As the school year begins, so does another season of sports. Now is the time to purchase a season pass to all district sporting events.

Sports schedules are available at all of the school buildings. If you have any questions please call the High School at 475-7861.

Pass prices are as follows:

- Family \$175
- Couple \$150
- Adult \$95
- Student \$70
- Senior Citizens Free (if you received a senior pass in the past you do not have to renew it.)

Ticket prices for all of the High School sporting events are \$5.00 for adults and \$3.00 for students.

Come and support our fine young men and women and join in the Miners' spirit!



MICHILD INSURANCE PROGRAM

- MICHild** Health and dental care for children age 19 and under. MICHild premiums are \$10 per family per month.
- Healthy Kids** Health and dental care for pregnant women & children age 19 and under. Health kids is free except for small co-pay for some services if you are age 21 or older.
- PLAN FIRST!** Family planning services for women age 19 to 44 who are not pregnant.

To determine if you qualify for any of the above programs go to www.healthcare4mi.com or apply with a paper application by calling 1-888-988-6300 and ask for application, or go to www.michigan.gov/mdch and print an application

Information on all programs is available at www.michigan.gov/mdch or call 1-800-642-3195

ASBESTOS MONITORING WITHIN THE DISTRICT

The Negaunee Schools are continuing to follow a plan to manage the asbestos in our school buildings. The buildings all contain asbestos, but it is not a health hazard if it is maintained properly. We are working to keep all of the asbestos materials in good condition. We only use licensed personnel to work on our asbestos. We have contracted with a local abatement contractor to continue to work on our asbestos on a yearly basis and keep it repaired. They are scheduled to come on a yearly basis.

The Asbestos Management plan has all of the details of past and present asbestos activities in our school district along with a description of the location of all of the asbestos materials. This plan is available for your inspection in the district's Administration Office during regular office hours.

If you have any questions or concerns, contact Mary Kay Johnson, Administrative Aide for Finance, at 101 South Pioneer Avenue, Negaunee, MI 49866 or phone 475-4156.

SCHOOL SAFETY REPORT

One student was expelled from the district for violation of weapons possession.

IMMUNIZATION REQUIREMENTS

To enter school, state law* prohibits a principal or teacher from admitting new entrants to school without a record of having received at least one dose of each: Measles, Mumps, Rubella, Polio, Diphtheria, Tetanus, Pertussis, Varicella (Chicken Pox), and effective January 1, 2000, Hepatitis B. To stay in school, a record of the following immunizations must be provided to the school:

DIPHTHERIA, TETANUS, & PERTUSSIS**- Ages 4-6: Four doses are required. If a dose was not given on or after the 4th birthday, a booster dose of DPT is required. Most children will have 5 doses. Ages 7-18: Four doses are required. If five years have passed since the last dose of tetanus/diphtheria vaccine – a booster of (DTAP, TD or DT) needs to be given.

POLIO-Ages 4-6: Three doses are required. If the last dose was not given on or after the 4th birthday, a booster dose is required. Most children will have four doses. Ages 7-18: Three doses are required.

MEASLES, MUMPS, & RUBELLA-Ages 4-6: Two doses are required. The 1st dose must be given on or after the 1st birthday. The 2nd dose must be given at least 28 days from the 1st dose. Ages 7-18: Two doses are required. **HEPATITIS B**- Ages 4-6: Effective January 1, 2000, three doses are required; Ages 7-18: Effective January 1, 2000, three doses are required. All children entering 6th grade or are new in the district must be up-to-date on this immunization. **VARICELLA (CHICKEN POX)*****- Beginning January 1, 2010, the following requirements are in effect: All children entering kindergarten, all 6th grade students, and all children changing school districts: Two doses of varicella (Var) vaccine or a history of chickenpox.

MENINGOCOCCAL – Beginning January 1, 2010, the following requirements are in effect: children 11-18 years of age who are changing school districts or who are enrolled in 6th grade: One dose of Meningococcal (MCV4 or MPSV4) vaccine.

Children who have not received the required immunizations will be excluded from school until parents provide proof that all required immunizations have been given, or have a waiver on file. Please refer questions to your child's school office or the school nurse's office. There are three circumstances in which immunizations may be waived or delayed: A valid medical contradiction exists to receiving the vaccine, the parent/guardian hold religious or philosophical beliefs against receiving the vaccine, or the child has received at least one dose of each immunizing agent; however the next dose or doses are not due yet.

In May 2006, the Michigan Department of Community Health put into effect a new requirement for all children ages 2 months to 4 years of age who attend preschools, head start, or licensed childcare programs to receive the pneumococcal conjugate vaccine (Prevnar) beginning January 1, 2007. This requirement applies to the Negaunee Public Schools' PPI and Early Development Childcare Program. Prevnar is a vaccine that protects against ear infections, sinusitis, pneumonia, meningitis, and blood infections caused by many different types of the pneumococcal bacteria.

***Part 92, Act 368 of the Public Acts of 1978, as amended.**

****Children ages 4-6 must have received 4 doses of Pertussis. DT is only accepted if a signed waiver is on file for that particular dose of Pertussis vaccine.**

*****Reliable history of Chicken Pox disease is acceptable in lieu of the vaccine.**



SCHOLARSHIP DONATIONS

Through the efforts and generosity of various organizations, families, and community members, students of the Class of 2012 at Negaunee High School had the opportunity to apply for numerous scholarships. Many organizations sponsor their own scholarship and there are also local scholarships run through Negaunee High School. Scholarship recipients were honored at the Academic Awards Program on Thursday, May 31, 2012.

Over the years, the number of awards has increased as a result of donations from organizations and individuals. We would like to thank the sponsors of the following scholarships for the 2011/12 school year, which totaled more than \$70,000. It is exciting that our community supports education to such an impressive extent! There is always room to add another scholarship and if your family or an organization you belong to are interested in establishing a local scholarship, please contact the Negaunee High School Guidance Office at 475-7861.

- | | |
|--|---|
| <p>Ardes & George Williamson Memorial Scholarship
 Arthur Wassberg Business Scholarship
 Bell Baby Scholarship
 City of Negaunee Electric Dept./Wisconsin Public Power Scholarship
 Cliffs Natural Resources & Associated Companies Scholarships
 Coach King Athletic Memorial Scholarship
 Dick Koski Athletic Scholarships
 Dillon Frances Menard Legacy Scholarship
 Diocese of Marquette-Bibianne Bessette Scholarship
 Excellence In Writing Scholarship
 Frank Matthews Memorial Scholarship
 Fred Benzie Memorial Scholarship
 George Collins Memorial Scholarship
 Greater Ishpeming Pioneer Kiwanis Key Club Scholarship
 High School Bowl Championship Scholarship
 High School Bowl Goldsmith Scholarship
 Hilma Pynnonen Van Eerden Scholarship
 In Loving Memory of Erin Mueller-Lawson Scholarship
 Ishpeming Community Federal Credit Union Scholarships
 Ishpeming Rotary Scholarship
 James and Elizabeth Dompierre Memorial Scholarship
 Joseph & Rosina Ghiardi Scholarship
 Margaret K. Bartle Memorial Scholarship
 Marquette Builders Exchange Scholarship
 Marquette County Paisano Club Scholarship
 Marquette County Vietnam Veterans Chapter 380 Scholarships
 Matthew Worthington Memorial Scholarship
 McNabb Family Scholarships
 Method Family Scholarships
 Michigan Scottish Rite Fund Scholarship
 Michigan Education Association Scholarship
 Michigan Retailers Association Scholarship
 Mining Journal Student of the Year Scholarship
 Nancy J. Skewis Memorial Scholarship
 National Honor Society Scholarships
 Neely Family Scholarships
 Negaunee Area Community Fund: Dr. E William and Dorothy A. Sivula Scholarship
 Negaunee Area Community Fund: Levine Family Scholarship
 Negaunee Area Community Fund: Dr. James Lehto Memorial Scholarship</p> | <p>Negaunee Area Community Fund: Negaunee Environmental Studies Scholarship
 Negaunee Area Community Fund: Negaunee Public Schools Citizenship Scholarship
 Negaunee Area Community Fund: Raymond Pajula Scholarships
 Negaunee Area Community Fund: Saima Kuivila Teacher Educator Scholarship
 Negaunee Area Community Fund: Saima Kuivila Salutatorian Scholarship
 Negaunee Area Community Fund: Waino and Joanne Liuha Scholarship
 Negaunee Band Backers Scholarship
 Negaunee Booster Club Scholarships
 Negaunee City Fire Department Scholarship
 Negaunee Education Association Scholarships
 Negaunee Elks Youth Leadership & Music Scholarships
 Negaunee High School Alumni Association Scholarship
 Negaunee High School Staff Denim Day Scholarships
 Negaunee High School Student Council Scholarships
 Negaunee Irontown Association Community Service Scholarship
 Negaunee Irontown Association: In Memory of Bill Jennings
 Negaunee Lion's Club "We Serve" Award Scholarship
 Negaunee Public Schools Valedictorian Scholarship
 Negaunee Township Fire Department Scholarship
 NIT Community Service Scholarship
 NIT/Norman "Boosta" Stanaway Memorial Scholarship
 North Jackson Company Scholarships
 Oddfellows Scholarship
 Philip and Bertha Levine Scholarship
 Pineview Alumni Scholarship
 Range Bank Scholarship
 River Valley Bank Scholarship
 St. Christopher's Catholic Parish: Fr. Brown Scholarship
 St. Paul's Parish Scholarship
 Sam Cohodas Scholarship
 SIR Federal Credit Union Scholarships
 Teal Lake Masonic Lodge Scholarship
 Terry Talo/Mike Trewhella Scholarship
 The Dominic and Alice Ghiardi Scholarship Fund
 Thomas F. Pellow Scholarship
 United Steelworkers Local 4950 Scholarships
 Zonta Club of Marquette – Z-Club Scholarship</p> |
|--|---|



KINDERGARTEN REGISTRATION

ATTENTION PARENTS OF CHILDREN THAT WILL BE 5 YEARS OF AGE ON OR BEFORE DECEMBER 1, 2012. IT IS NOT TOO LATE TO REGISTER YOUR CHILD FOR KINDERGARTEN FOR THE 2012-13 SCHOOL YEAR.

FOR MORE INFORMATION OR TO REGISTER YOUR CHILD CALL LAKEVIEW ELEMENTARY SCHOOL AT 475-7803.

NEGAUNEE PUBLIC SCHOOLS - BUS TRANSPORTATION 2012-2013

MORNING PICKUP RUNS

**Bus #1 - Larry Peterson
(HS/MS)**

- 6:45 - Wilderness, East to West
- 6:55 - Airport Circle
- 6:50 - Kivela Road
- 7:00 - South Basin Drive
- 7:08 - Maple Ridge Road
- 7:12 - End of North Road
- 7:22 - North Road Back to Kivela Rd
- 7:25 - Valley Road
- 7:28 - North Baldwin Avenue
(LAKEVIEW)
- 7:40 - North Baldwin Ave
- 7:42 - Valley Road
- 7:47 - Corner North Road/Mattson Rd
- 7:55 - South Basin Drive
- 8:07 - Maple Ridge
- 8:11 - End of North Road
- 8:23 - Kivela Road

**Bus #2 - Dennis Dompierre
(HS/MS)**

- 6:45 - County Road 510 (#400's)
- 6:50 - North Basin Drive
- 6:55 - Corner White Bear Drive/CR 510
- 7:00 - NeeJee Road
- 7:10 - Hoist Road
- 7:20 - Hardwood Lane/Superior View
(LAKEVIEW- Early Run)
- 7:45 - North Basin Drive (End)
- 7:50 - County Rd 510 (#400's)
- 7:55 - Corner CR 510/White Bear Drive
- 8:00 - NeeJee Road
- 8:05 - Corner CR 510/Brandon Dr
- 8:10 - Hardwood Lane/Superior View
- 8:15 - Longyear Drive
- 8:18 - Midway Drive (#215-225)
(LAKEVIEW- Late Run)
- 8:32 - Baldwin Ave (#721)
- 8:34 - Mitchell Avenue
- 8:36 - Miners Dry/Hungerford Ave
- 8:40 - Camelot Dr & Lexington Blvd
- 8:43 - Cherry Street

**Bus #3 - Theodore Deur
(HS/MS)**

- 6:50 - Snowfield & Carrie Roads
- 6:55 - Horseshoe Lk Circle & Pine Run
- 7:05 - Corner U.S. 41 & Perala Court
- 7:10 - Forest Drive
- 7:15 - Forge Road
- 7:20 - E Maas Street/Woodland Drive
- 7:23 - E Maas Street/Sunset Drive
(ASPEN RIDGE/NICE & LAKEVIEW)
- 7:35 - Corner Midway Dr/White Birch
- 7:45 - Wenonah Street (#1209)
- 8:00 - **ASPEN RIDGE/NICE
(LAKEVIEW)**
- 8:18 - Cambria Road
- 8:22 - Water Street
- 8:25 - W Arch Street
- 8:30 - E Maas Street/Sunset Drive
- 8:32 - E Maas Street/Woodland Drive
- 8:34 - Little Friends Daycare

**Bus #5 - Mike Frustaglio
(LAKEVIEW - Early Run)**

- 7:40 - Snowfield & Carrie Roads
- 7:45 - Corner U.S. 41/Perala Court
- 7:47 - Forest Drive
- 7:50 - Horseshoe Lake Circle
- 7:53 - Pine Run & Corner Oakview Drive
- 8:00 - Forge Road
- 8:10 - Acocks Drive
- 8:13 - Corner CR 492/Quarry Road
- 8:18 - M-35 from C.R. 492 to US 41
- 8:23 - Iroquois, Chippewa, Huron Ct
(LAKEVIEW- Late Run)
- 8:28 - Corner E Case St/McKenzie Ave
- 8:30 - Corner McKenzie Ave/E Peck St
- 8:32 - Corner McKenzie Ave/E Clark St
- 8:35 - Corner W Clark St/Pioneer Ave
- 8:37 - Corner W Clark St/Kanter St
- 8:39 - Corner W Clark St/Tobin Street
- 8:41 - Corner W Peck St/Pioneer Ave

**Bus #6 - Michelle Gill
(LAKEVIEW)**

- 7:20 - County Road MQ
 - 7:25 - Corner M-35/C.R. MU (Mt SC Parents)
 - 7:30 - County Road MP
 - 7:35 - County Road ML to CR 565
 - 7:45 - Corner M-35/CR MJ
 - 7:55 - Corner M-35/CR ME
- Palmer Bus Stops Are As Follows:**
- 8:00 - Simpson St - Stop @Mid- 200 Block
 - 8:03 - Corner Isabella Ave/Bennett
 - 8:05 - Corner Richmond Rd/Smith St
 - 8:07 - Corner Kirkpatrick Ave/Bennett
 - 8:10 - Corner Nicholas Ave/Reade
 - 8:10 - Kirkpatrick Ave-Stop Mid- 100 Blk
 - 8:12 - Snyder Street (M-35)
 - 8:17 - County Road MA

**Bus #10 - Tom Talsma
(HS/MS)**

- 6:35 - M-35 from U.S. 41 to CR 492
- 6:45 - Quarry Road (Mt S/C Parents)
- 6:55 - Grimes Road
- 7:05 - Old 480 & W Jarvi Rd
- 7:10 - County Road 480 East #200+
- 7:15 - Seney Road (Meet S/C Parents)
- 7:20 - County Road 480 (#107-81)
(LAKEVIEW)
- 7:40 - Grimes Road
- 7:45 - M-35 to C.R. 480
- 7:48 - Annex Road
- 7:50 - Corner M-35/Makinen Road
- 7:55 - M-35 (#601-563)
- 7:58 - County Road 480 (#91-83)
- 8:03 - Old 480 & W to E Jarvi Road
- 8:10 - County Road 480, E (#200+)
- 8:15 - Seney Road (Meet S/C Parents)
- 8:25 - Buffalo Road

**Bus #11 - Theresa Johnson
(HS/MS)**

- 6:30 - County Road MM (Meet School-Choice)
- 6:40 - County Road ML to C.R. 565
- 6:52 - Corner M-35/County Road MJ
- 6:54 - Corner M-35/County Road MI
- 7:00 - M-35/County Road ME
- 7:03 - Bus Stop-Corner Isabella/Lancaster
- 7:06 - Bus Stop-Corner Smith/Richmond Rd
- 7:10 - Bus Stop-Corner Kirkpatrick/Warren
- 7:20 - M-35 to County Road 480
- 7:25 - Buffalo Road

**Bus #13 - Bill Grill
(HS/MS)**

- 6:55 - Midway Drive (#219-206)
- 7:00 - Longyear Drive (@Turri's Corner)
- 7:02 - Longyear Drive (@#38-Luke)
- 7:05 - Corner Midway Dr/White Birch Dr
- 7:07 - Corner Midway Dr/Brebner Road
- 7:10 - Midway Drive (#166-3)
- 7:20 - Heritage Drive
- 7:25 - Iroquois/Chippewa/Huron Court
(LAKEVIEW - Early Run)
- 8:00 - Corner Midway Dr/White Birch Dr
- 8:03 - Corner Midway Dr/Brebner Road
- 8:07 - Midway (#164-3)
- 8:13 - Wilderness Road, East to West
- 8:18 - Airport Circle Drive
- 8:23 - Heritage Drive & Riverview Drive
(LAKEVIEW- Late Run)
- 8:30 - Corner Prince St/Elm Street
- 8:32 - Corner Prince St/Lake Street
- 8:35 - Carr Street

**Bus #14 - Joanne Wyman
(HS/MS)**

- 6:45 - Teal Lake Estates
- 6:50 - Cambria Road
- 6:55 - W Water Street
- 7:00 - County Road W/Michigan Street
- 7:05 - County Road E/Rolling Mill
- 7:07 - Corner Patch & Tracy Roads
- 7:12 - Corner Ann/Houghton, Queen St, Truscott
7:20 - NHS/NMS
- 7:25 - Corner Maas/Pine Streets
(Baldwin, Croix, Maas, Maple, Oak, Pine)
- 7:28 - Hungerford/LV Music Room
(LAKEVIEW- Early Run)
- 8:03 - County Road W/Michigan St
- 8:08 - Rolling Mill & Patch Location
- 8:12 - Division & Copper Streets
- 8:14 - Corner Copper & Peninsula Sts
- 8:16 - Gold & Copper Streets
- 8:18 - Rail Street/S Pioneer Ave
- 8:20 - Punkin Patch Daycare
- 8:23 - Corner W Case/Pioneer Ave
(LAKEVIEW- Late Run)
- 8:30 - Ann/Houghton, Sterling, Sherman, Truscott
- 8:38 - Corner Healy Ave/Lincoln St
- 8:40 - Lincoln Street
- 8:42 - W Main Street
- 8:44 - E Main Street
- 8:45 - Corner E Case St/Brown Ave

**EARLY-ON & ECDD CLASSES - LAKEVIEW
(M,T,W,TH ONLY - Bussing Starts 9/5/12)**

- Bus #7 - Kathy DeGabriele**
- 7:30 - NeeJee Road (#154)
 - 7:50 - Chippewa Drive (#142)
 - 7:55 - Corner W Clark/Pioneer Ave (116 Rock)
 - 8:00 - Gold Street (#420)
 - 8:03 - County Road (#607)
 - 8:06 - E Main St (#108)*
 - 8:08 - N Teal Lake Ave (#210)*
 - 8:10 - Cherry Street (#513)
 - 8:13 - Birch Street (#100)
 - 8:15 - Lakeview School**
 - 8:35 - Gold Street (#342)
 - 8:38 - McKenzie Avenue (#111)
 - 8:42 - Pine Street (#956)
 - 8:45 - Lakeview School**

Bus #11 - Theresa Johnson

- 7:50 - Kirkpatrick Avenue (#109)
- 7:52 - Isabella Avenue (#307)
- 7:54 - Simpson Avenue (#304)
- 7:56 - Simpson Avenue (#206)
- 8:15 - Lakeview Special Ed Door (Upper Gym)**

(FRIDAY - Special Bussing)

Bus #7 - Kathy DeGabriele

- 8:15 - NeeJee Road (#154)
- 8:35 - Gold Street (#342)
- 8:38 - McKenzie Avenue (#111)
- 8:42 - Pine Street (#956)
- 8:45 - Lakeview School**

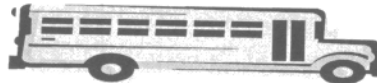
**COMBINATION PICK UP & DROP OFF RUN
(Lakeview - Monday-Thursday)**

Bus #7 - Kathy DeGabriele

- 11:25 - LV Spec Ed Door (Upper Gym)
- 11:30 - 100 Birch St or Lil Friends Daycare
- 11:33 - Chippewa Dr (#142)
11:43 - South Basin Dr (#140)
- 11:45 - North Road (#422)
- 11:55 - W Wilderness (#129)/201 Airport Crcl
- 12:10 - NeeJee Rd (#154)
- 12:14 - County Road 510 (#334)
- 12:23 - Croix Street (#808&812)
- 12:26 - Lake Street (#522)
- 12:30 - Lakeview Drop

Bus #11 - Theresa Johnson

- 11:25 - LV Spec Ed Door (Upper Gym)
- 11:30 - Cherry Street (#513)
- 11:32 - E Main St (#108)*
- 11:34 - N Teal Lake Ave (#210)*
- 11:36 - Corner Pioneer Ave/Rock Street (#116)
- 11:38 - Gold Street (#420)
- 11:40 - County Road (#709 & 607)
- 11:55 - Kirkpatrick Ave (#109)
- 11:57 - Isabella Ave (#307)
- 12:00 - Simpson St (#304 & 206)
- 12:20 - N McKenzie Ave (#111)*
- 12:23 - Carr St (#733)
- 12:25 - Baldwin Avenue (#721)
- 12:30 - Lakeview Drop



TAKE HOME RUNS ARE LISTED ON BACK

***THIS BUSSING SCHEDULE IS SUBJECT TO CHANGE AT ANY TIME**

NEGAUNEE PUBLIC SCHOOLS - BUS TRANSPORTATION 2012-2013

AFTERNOON TAKE HOME RUNS

Bus #1 - Larry Peterson

2:30 - NMS/2:45 - NHS
 3:05 - Wilderness, East to West
 3:10 - Airport Circle
 3:15 - Kivela Road
 3:20 - South Basin Drive
 3:25 - Maple Ridge Road
 3:30 - North Road
 3:35 - Valley Road
 3:40 - Lakeview School @Cafe Lot
 3:55 - Valley Road
 4:02 - Corner North Road/Mattson Rd
 4:15 - South Basin Drive
 4:20 - Maple Ridge Road
 4:35 - Kivela Road
 4:40 - Bus Garage

Bus #2 - Dennis Dompierre

2:30 - NMS/2:45 - NHS
 3:00 - U.S. 41 & Perala Court
 3:10 - Hardwood Lane & Superior View
 3:15 - County Road 510/Brandon Drive
 3:20 - Hoist Road
 3:25 - NeeJee Road
 3:35 - North Basin Drive
 3:45 - Lakeview School @Cafe Lot
 3:55 - Midway Drive-Mqt Side
 3:58 - Longyear Drive
 4:03 - Hardwood Lane & Superior View
 4:08 - Hoist Road
 4:13 - NeeJee Road
 4:20 - North Basin Drive
 4:38 - Snowfield & Carrie Road
 4:45 - Bus Garage

Bus #3 - Theodore Deur

3:40 - Lakeview School @Hungerford
 3:50 - Corner E Maas & Sunset Drive
 3:52 - Little Friends Daycare
 3:55 - Corner E Maas & Woodland Dr
 4:05 - Cambria Road
 4:10 - Water Street, W
 3:50 - W Arch Street
 4:20 - Bus Garage

Bus #5 - Mike Frustaglio

3:45 - Lakeview School @Hungerford
 3:50 - Corner E Case St/McKenzie Ave
 3:52 - Corner McKenzie Ave/E Peck St
 3:54 - Corner McKenzie Ave/E Clark St
 3:57 - Corner W Clark St/Pioneer Ave
 3:59 - Corner W Clark St/Kanter St
 4:01 - Corner W Clark St/Tobin Street
 4:03 - Corner W Peck St/Pioneer Ave
 4:10 - Lakeview School @Cafe Lot
 4:15 - Iroquois/Chippewa/Huron Court
 4:20 - Corner U.S. 41/Perala Court
 4:22 - Forest Drive
 4:24 - Forge Road
 4:34 - Acocks Dr & Quarry Rd
 4:42 - M-35 from C.R. 492 to US 41
 4:45 - Horseshoe Lake Circle
 4:50 - Pine Run & Corner Oakview Drive
 4:55 - Bus Garage

Bus #6 - Michelle Gill

3:40 - Lakeview School @Hungerford
 3:55 - County Road MA
 4:05 - Palmer Stops (Same as A.M.)
 4:20 - County Road MJ
 4:30 - County Road ML to C.R. 565
 4:45 - County Road MU (Mt S/C Prnts)
 5:00 - Bus Garage

Bus #7 - Kathy DeGabriele

3:00 - Aspen Ridge/NICE
 3:10 - Wenonah Street (#1209)
 3:20 - Corner Midway Dr/White Birch
 3:40 - Lakeview - ECDD (M-TH)
 3:50 - Pine Street (#956)
 3:52 - Croix Street (#808 & 812)
 3:55 - Baldwin Avenue (#721)
 3:57 - Lake Street (#522)
 3:58 - Carr St (#733)
 4:00 - McKenzie Avenue (#111)*
 4:05 - County Road (#709)
 4:13 - South Basin Drive (#140)
 4:15 - North Road (#422)
 4:25 - W Wilderness Road (#129)
 4:40 - NeeJee Rd (#154)
 4:45 - County Road 510 (#334)
 5:00 - Bus Garage

Bus #10 - Tom Talsma

2:30 - NMS/2:45 - NHS
 3:00 - M-35 from U.S. 41 to CR 492
 3:10 - Acocks Drive/Quarry Road
 3:20 - Grimes Road
 3:25 - Old 480 & West Jarvi Road
 3:30 - County Rd 480, E (#200+)
 3:35 - Seney Road (Meet S/C Parents)
 3:45 - Lakeview School @Cafe Lot
 3:55 - Buffalo Location
 4:00 - Annex Road/Makinen Road
 4:10 - Old 480 & Jarvi Road
 4:15 - M-35 to CR 480
 4:20 - County Road 480 to Seney Road
 4:30 - Bus Garage

Bus #11 - Theresa Johnson

2:30 - NMS/2:45 - NHS
 3:00 - Buffalo Location
 3:10 - Palmer Stops (Same as A.M.)
 3:18 - Corner M-35/County Road ME
 3:28 - M-35 to County Road ML
 3:37 - County Road ML to C.R. 565
 3:40 - County Road MM (Mt S/C Parents)
 4:00 - Bus Garage

Bus #13 - Bill Grill

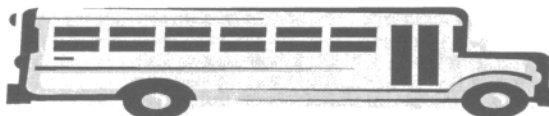
2:30 - NMS/2:45 - NHS
 3:00 - Iroquois/Chippewa/Huron Court
 3:05 - Heritage Drive
 3:12 - Midway Drive (#219-206)
 3:17 - Longyear Drive
 3:20 - Corner Midway Dr & White Birch Dr
 3:25 - Midway Drive (#166-3)
 3:40 - Lakeview School @Hungerford
 3:50 - Corner Prince St/Elm Street
 3:53 - Corner Prince St/Lake Street
 3:55 - Carr Street
 4:00 - Lakeview School @Cafe Lot
 4:10 - Heritage Drive & Riverview Drive
 4:15 - Wilderness Road
 4:20 - Airport Circle
 4:30 - Corner Midway Dr/White Birch Dr
 4:35 - Corner Midway Dr/Brebner Road
 4:40 - Midway (#164-3)
 4:45 - Bus Garage

Bus #14 - Joanne Wyman

2:30 - NMS/2:45 - NHS
 3:00 - County Road, W/Michigan Street
 3:05 - County Road, E/Rolling Mill
 3:10 - Ann Street
 3:20 - Teal Lk Estates/Cambria/Water St
 3:45 - Lakeview School @Hungerford
 3:50 - Corner W Case/Pioneer Ave
 3:52 - Punkin Patch Daycare
 3:55 - County Road W/Michigan St
 3:58 - Rolling Mill & Patch Location
 4:00 - Corner Division & Copper Streets
 4:02 - Corner Copper & Peninsula Sts
 4:04 - Corner Copper & Gold Sts
 4:06 - Rail Street/S Pioneer Ave
 4:10 - Lakeview School @Cafe Lot
 4:15 - Corner E Case St/Brown Avenue
 4:17 - Corner Healy Ave/Lincoln St
 4:20 - Lincoln Street
 4:23 - Main Street - West to East
 4:27 - Ann St/Houghton, Sterling, Sherman, Truscott
 4:45 - Bus Garage

Bus #17 - Gary Bischof

2:30 - NMS/2:45 - NHS
 2:55/3:05 - Corner Croix/Maas Streets
 2:58/3:08 - Corner Maas/Pine Streets
 3:10 - E Maas Street/Sunset Drive
 3:12 - E Maas Street/Woodland Drive
 3:17 - Forge Road
 3:20 - Forest Drive
 3:25 - Horseshoe Lk Circle/Pine Run
 3:30 - Snowfield & Carrie Roads
 3:45 - Lakeview School @Hungerford
 3:50 - Baldwin Ave (#721)
 3:52 - Mitchell Avenue
 3:54 - Miners Dry/Hungerford Ave
 3:58 - Camelot Dr & Lexington Blvd
 4:03 - Cherry Street
 4:10 - Snowfield & Carrie Roads
 4:15 - Bus Garage



**PLEASE READ THROUGH THE BUS ROUTES.
 MANY BUS NUMBERS & ROUTES HAVE CHANGED!**

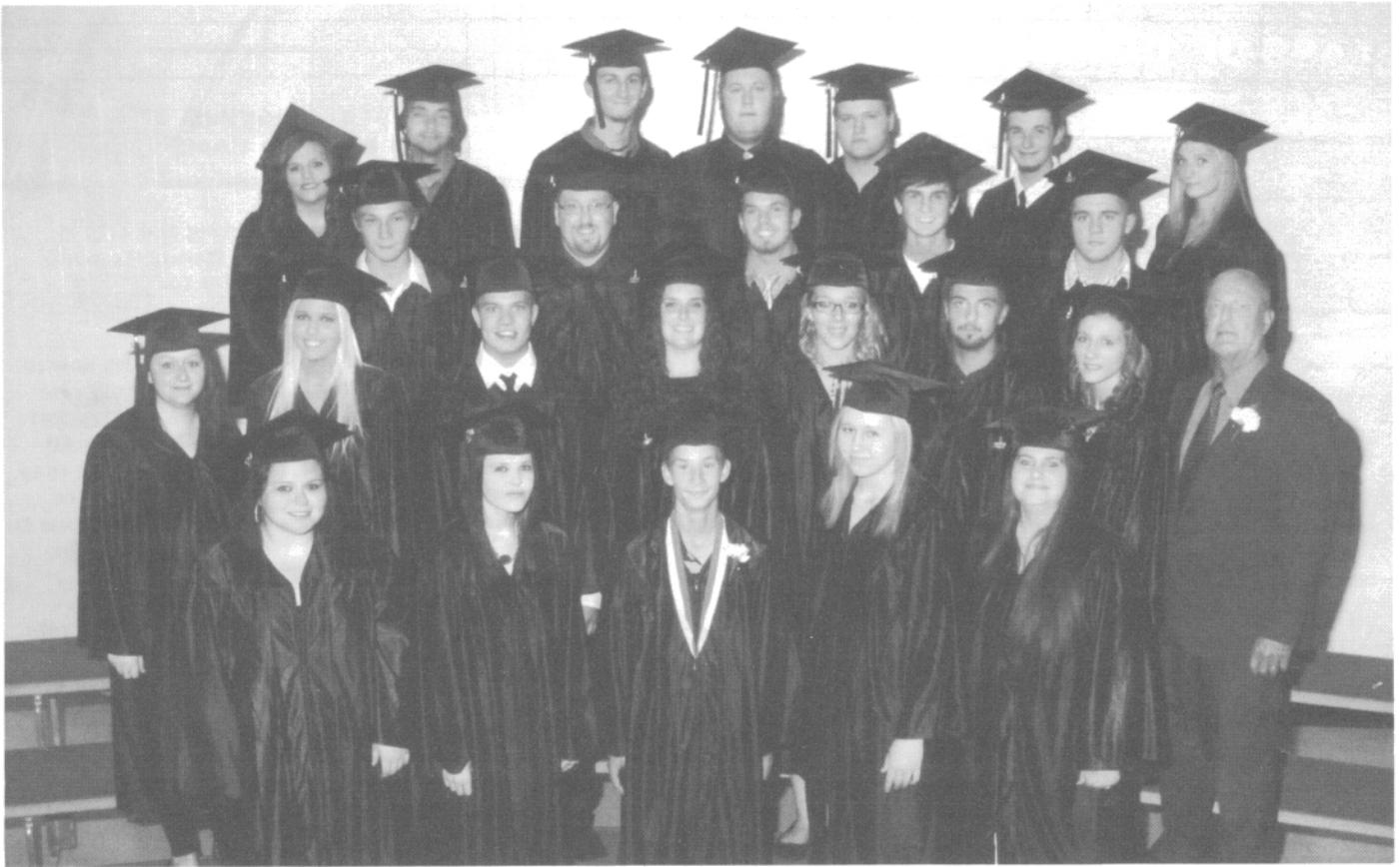
Your child is to be at their bus stop 10 minutes earlier than the time listed.

K-12 Bussing Starts the 1st Day of School - Tuesday, September 4, 2012
 Early-On & ECDD Bussing Starts on Wednesday, September 5, 2012

Class Starts: NHS 7:40; NMS 7:45; LV 8:55; Early On & PPI at LV 8:15 & 12:30

Dismissals : NMS 2:35; NHS 2:50; LV 3:45;
 Early On & PPI Programs at LV 11:30 & 3:45

****THIS BUSSING SCHEDULE IS SUBJECT TO CHANGE AT ANY TIME****



2012 ISHPEMING-NEGAUNEE-NICE COMMUNITY SCHOOLS ADULT GRADUATION CLASS

4th Row: Natalie Kinnunen, Stan Wodowski, Casey McCullough, Tyler Romback, Travis Prisk, Michael Underwood, Hannah Kroupa

3rd Row: Bradley Rogers, Timothy Sicotte, Adam Hackney, Derek Kudis, Brian Parkkila

2nd Row: Brittany Parkkila, Ashley Oja, Michael Lyons, Sabrina McNichol, Aundrea Leader, Dylan LaCosse, Brittany Ferrett, and William Hartman, Director

1st Row: Ashley Cote, Jamie Smith, Travis Brozak, Amy Kangas, Billie-Jo Underwood

Not Pictured: Megan Jordan, Timothy Whisenant

WHAT IS ADULT SERVICES?

Adult Services is an alternative high school completion program offered through Ishpeming-Negaunee-NICE Community Education Division under the direction of Bill Hartman. Students range in ages from 13-19 and meet four days a week at St. John's School at 325 South Pine Street in Ishpeming. Classes meet Monday through Thursday from 8:00 a.m. until 3:30 p.m.

Students must earn 20 credit hours to receive their diploma once their original class has graduated. State certified teachers offer a full slate of classes. Michigan Merit courses are offered as well as art, gym, and computer technology. Small class sizes make individualized instruction available to all participants. Computers with internet access are available for each student. They utilize the technology for research, drill, and word processing.

Class Speaker Travis Brozak said "Attending Adult Services has had a huge impact on my life. I now have the necessary skills and confidence to either further my education or go out and get a job. Anyone who is having difficulties in regular school should consider attending Adult Services."

Teachers are aware of the research on learning modes, and lesson plans are geared to incorporate material relevant to the full range of learning styles. Students who attend the program like the smaller class sizes, the freedom to work at their own pace, the relaxed atmosphere, and the opportunity to do creative projects in all of their classes. The highly qualified teaching staff, which consists of six teachers (Carole Prisk, Ellen Flack, Jason Houle, Barbara Blewett, Laura Kantola, Bill Koski), spend a lot of time and energy trying to help these young adults to obtain their high school diploma. Bill Hartman, Director, credits the excellent staff for the success of the program.

ADULT EDUCATION CLASSES

If you or a friend are looking to get that much needed and valuable high school diploma, please call our office at 475-4173. Community Schools will be offering evening classes at the Negaunee High School. Classes are free to those who are working toward a diploma. Remember, getting a high school diploma is just one step toward building a successful future and securing a better job.

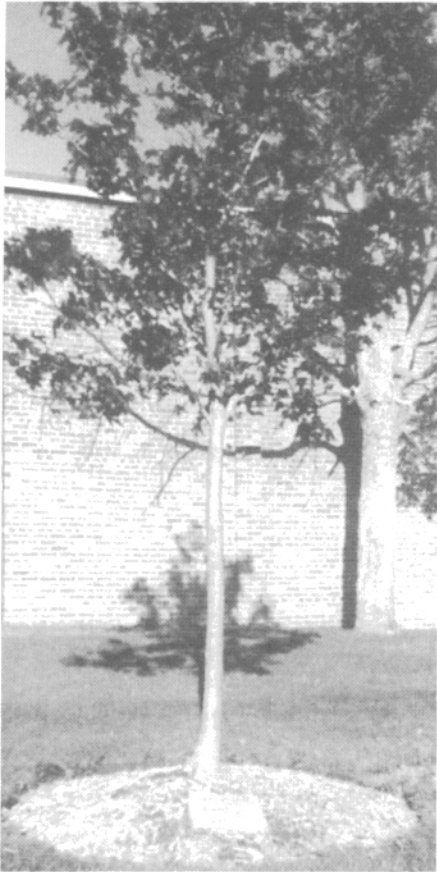
FALL ENRICHMENT CLASSES

The Ishpeming-Negaunee-NICE Community Schools Fall Enrichment Classes will begin on September 17.

Our fall brochure will be mailed on September 4.

Registration for fall enrichment classes will begin on September 5.

CLASS OF 1978 DONATES A TREE



As students arrive at Lakeview this school year they may notice a new tree on the school grounds!

The tree, a red maple, was donated to, the school, by the Class of 1978 in memory of their classmates.

A memorial plaque was also placed at the base of the tree.



CITIZENS SUPPORTING THE ARTS FUND RAISER CAMPAIGN

A group of citizens supporting the arts is working with the Lakeview Parent Teacher Partnership to raise \$10,000 for a replacement music shell.

The new music shell will enhance the sound quality of a performance, require only one person to assemble and be a safer structure for everyone. The current shell is over 40 years old and will be recycled so that it may be used to create something unique once again. Please help us with your donations to the Lakeview Parent Teacher Partnership, LPTP, for this project.

Good people can make great things happen. All donations will be greatly appreciated. Donation can be made to the LPTP (Attn: Lakeview Music Shell), 100 Croix Street, Negaunee, MI 49866.

Thank you for your help, Citizens Supporting the Arts Committee.

TRANSPORTATION MESSAGE

Marcia Manninen, Transportation Supervisor

We are looking forward to welcoming your child(ren) back for the new 2012-13 school year! Many of the bus routes and bus numbers have changed. Please look over the bussing schedule carefully and advise your child(ren) of any changes.

Safety Tips for Bus Riders –

- ⇒ Line up facing the school bus door – not along the side of the school bus.
- ⇒ Don't play in the street while waiting for the bus.
- ⇒ Never reach under a bus to get anything that has fallen or rolled underneath.
- ⇒ Get out of traffic and onto the sidewalk as soon as you get off the bus.
- ⇒ Wait for a signal from the bus driver before you cross the street.
- ⇒ Walk at least 10 steps in front of the bus so the driver can see you and never cross the street behind the bus.



REMINDER TO PARENTS – A written note is required for the bus driver if your child is to go anywhere other than home. Please indicate your child's name, date they will be riding, name and address of where they are to go. Many of our bus routes are figured at capacity limits, therefore, special arrangements are needed to accommodate daycare bussing. All requests are subject to denial if an overage is anticipated for that bus route. Thank you for your continued support.

CARRIER ROUTE PRESORT

BOXHOLDER
RURAL ROUTE
POSTAL ROUTE

NON-PROFIT ORGANIZATION
U.S. POSTAGE
PAID
NEGAUNEE, MI 49866
PERMIT NO. 39

BOARD OF EDUCATION
Virginia Paulson, President
Greg Toutant, Vice President
Susan Wideman, Secretary
Martin Saari, Treasurer
Fae Collins, Trustee
Martin Renaldi, Trustee
Dave Rice, Trustee
Regular monthly meetings are normally held on the third Monday of the month at 7:00 p.m. in the High School Library.